

The background features a stylized illustration of Mt. Fuji on the left, depicted with a light blue and white geometric pattern. To the right of the mountain is a large green circle with a white horizontal bar passing through its center. The bottom of the image shows a blue bamboo forest with silhouettes of four people in traditional Japanese clothing. The text is overlaid on the green circle and a yellow banner.

Mt.Fuji and Princess Kaguya Museum

Exhibitions Guide

Mt.Fuji and Princess Kaguya Museum

Exhibition Room 1

The History of the people living
around Mt. Fuji

All exhibitions in the Mt. Fuji and Princess Kaguya are showed under the big concept of “Living around Mt. Fuji”. At the Exhibition Room 1, geological environments of the southern foot of Mt. Fuji and the history of the local people who had lived here for more than 16,000 years from the Old Stone Age up until the late modern period are explained.



The heritage of the leader who had spread the technology of the handcraft industry across Fuji

No.4 Nakahara Tumulus Excavated Articles



This depicts local people rescuing Russian frigate stricken by tsunami

Rescue of Russian Frigate Diana Crews



New Exhibition: Fujikawa Ferry

This exhibition focuses on the history of Iwabuchi and Fujikawa where ferries were run in order for people to cross the river and to connect Suruga (former name of Shizuoka) to Kai(former name of Yamanashi). Screen images linked to miniature ferries, freight puzzles and exhibitions you can touch and learn from are also displayed.



Illustration of Taketori monogatari (the Tale of the Bamboo Cutter) of Mt. Fuji

Utagawa Hiroshige "Hara: Taketori monogatari (the Tale of the Bamboo Cutter) / Tokaido gojusan-tsui(Fifty-three pairings along the Tokaido Road)"



Above Figure: Information about Taketori monogatari (the Tale of the Bamboo Cutter)

Shadowgraphs and screen images are displayed at the entrance to the world of Princess Kaguya of Mt. Fuji.

Right Figure: The Worship Spaces Located in the Southern Foot of Mt. Fuji



Mt.Fuji and Princess Kaguya Museum

Exhibition Room 3

Mt. Fuji and Princess Kaguya

In Fuji City, the unique version of Taketori monogatari (the Tale of the Bamboo Cutter) in which Princess Kaguya goes back to Mt. Fuji and becomes the Goddess of Mt. Fuji is known. At the Exhibition Room 3, connections between Mt. Fuji and Princess Kaguya such as historical records, which researchers recently have found to support the unique version of Taketori monogatari, are showed. In addition, Mt. Fuji worship is explained by focusing on shugensha (mountaineering ascetic) who has practiced at the south side of Mt. Fuji.

Mt.Fuji and Princess Kaguya Museum

Exhibition Room 2

The casket for valuable items
of Mt. Fuji

In this section, fine articles associated with Mt. Fuji are displayed according to 6 subjects such as "Portraying Mt. Fuji", "Shaping Mt. Fuji", "Recording Mt. Fuji" and so on.



Exhibition Room 2

The casket for valuable items of Mt. Fuji



Small Dishes Shaping Mt. Fuji

Mt.Fuji and Princess Kaguya Museum

Exhibition Room 4

The expanse of
"Taketori Monogatari"

Locations related to Taketori monogatari (the Tale of the Bamboo Cutter) around Japan, items associated and programs working with Fujisan World Heritage Center are exhibited.



A Manhole Cover in Fuji City

Mt.Fuji and Princess Kaguya Museum

Exhibition Room 5

Special Exhibition Room

Exhibition Room 6

Multipurpose Room

At the Exhibition Room 5 & 6, specific subjects are periodically displayed.

We are using special display cases with high airtightness for Special Exhibition Room so that more precious articles can be exhibited.



Exhibition Room 5 Special Exhibition Room

Mt.Fuji and Princess Kaguya Museum

Library

In the Library, publications issued by museums inside and outside Shizuoka Prefecture and specialized books & children's books related to Mt. Fuji are collected, and books you can't find at ordinary libraries can be browsed. You can use a device to search & browse stored items and precious library shots.



Library

Mt.Fuji and Princess Kaguya Museum

Lecture Room

We will host classroom lectures. Registered groups are allowed to use this space as a meeting room.



Lecture Room

Laboratory and Atelier

At the Laboratory and the Atelier, a large variety of courses Mt. Fuji and Princess Kaguya Museum boasts are hosted. You can participate in courses of handmade Japanese paper, lacquered papier-mache, dyeing, ceramic art, making a clay pot, ukiyo-e (Japanese woodblock prints), cloisonné work, hammered work and so on. Course contents are improved on a daily basis.

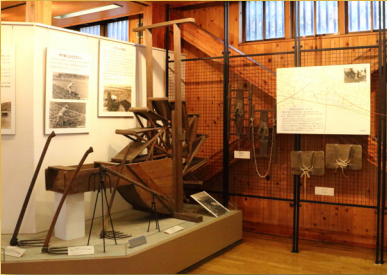
Right Figure: ceramic art course

**Right lower Figure: handmade
Japanese paper course**





Lives on the sea



Lives with rice fields



Praying for good harvest



Lives in the mountains

Right Figure: People planting rice while being immersed in mud up to the waist



History and folklore Museum

The 1st Floor

Fuji City area is spread between eastern low wetlands and a slope continuing to Mt. Fuji & Mt. Ashitaka and the gentle alluvial fan made by Fujikawa river & Uruigawa river falling into Suruga Bay.

Difference of elevation from a fishing village on the sea to the northernmost mountain village is 800 meters. A variety of people's lives adapting to each climate are explained.



War and living

History and folklore Museum

The 2nd Floor

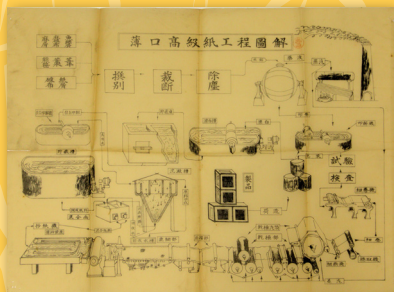
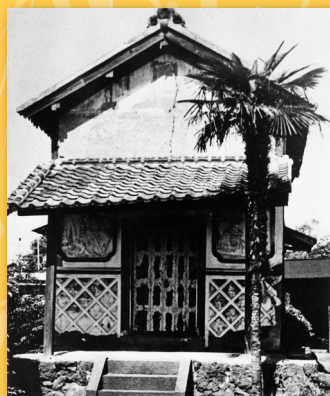


Chart Describing the Structure of a
Paper Factory in Early Showa Era

*Graphic Explanation of Process Flow of
High Quality Thin Paper*

Fuji City developed by using rich natural resources of forest and water of the southern foot of Mt. Fuji. In this section, Fuji City's history, school education, child's play and toys made of paper are shown. You can also see the exhibitions of the early modern war and a life in wartime.

Let's think about Fuji City in the late modern period and in the future through a filter of "City of Paper".



The old elementary school

Right Figure: Process Flow of
Handmade Japanese Paper

- 1) Reaping raw material
- 2) Steaming
- 3) Skimming



Visitor Information

Mt. Fuji and Princess Kaguya Museum

Open: Apr. to Oct. 9:00 am to 5:00 pm

Nov. to Mar. 9:00 am to 4:30 pm

Closed: Monday (open if it is holiday), Next Day of Holiday,

Year-end and New Year Holiday

Admission Fee: Free

History and folklore Museum

Open & Closed: Same as the Main Building

Admission Fee: Free

Hometown Village Historical Zone in Hiromi Park

Admission Fee: Free (Fire Ban, Smoking only in designated areas)

Open: 365 days (Unavailable if it rains or the museum is closed)

Fujikawa folklore Museum(Old Inaba's house*)

8-1 Iwabuchi, Fuji-shi, Shizuoka-ken 421-3305

Open: Saturday, Sunday, Holiday

Hours: Same as the Mt. Fuji and Princess Kaguya Museum

Contact: Mt. Fuji and Princess Kaguya Museum

Admission Fee: Free (Only seeing from the outside)

*Cultural Property Designated by Fuji City

Old hotel of Tokiwa's house

455 Iwabuchi, Fuji-shi, Shizuoka-ken 421-3305

Open: Saturday, Sunday, Holiday(9:00 am to 4:00 pm)

Contact: Mt. Fuji and Princess Kaguya Museum

Admission Fee: Free (No parking)

Getting to Mt. Fuji and Princess Kaguya Museum

By Local Bus: Get on a bus from the No.3 stop at Yoshiwara Chuo station (bus terminal). Get off the bus at Hiromi Danchi Iriguchi stop, 3 minutes on foot from the bus stop

By Expressway Bus: 20 minutes on foot from Tomei Expressway's Fuji IC

By Car: 1 minutes from Nishi-Fuji Road's Obuchi/Hiromi IC

By Train: 20 minutes by car from Fuji station, Shin-Fuji station and Yoshiwara station



The Mt. Fuji and Princess Kaguya Museum



History and folklore Museum



Contact us

Mt.Fuji and Princess Kaguya Museum (Fuji municipal museum)

66-2 Denbou, Fuji-shi, Shizuoka-ken 417-0061

TEL (0545) 21-3380 FAX (0545) 21-3398

<http://museum.city.fuji.shizuoka.jp/>

E-mail museum@div.city.fuji.shizuoka.jp

